



**MORTON
MIXERS**

Batch Multi-Mixer



Mixing is our Business



Morton Mixers Ltd are at the forefront in the design, manufacture and applications technology of plough blade mixers, and has gained world wide reputation for reliability and quality.



The Multi-mixer is designed to meet the demands for fast precision mixing of components with wide ranging quantity proportions, densities, structures and flow characteristics.

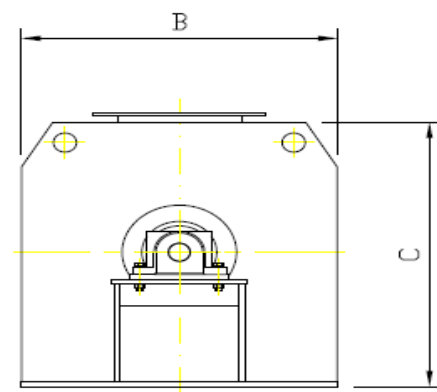
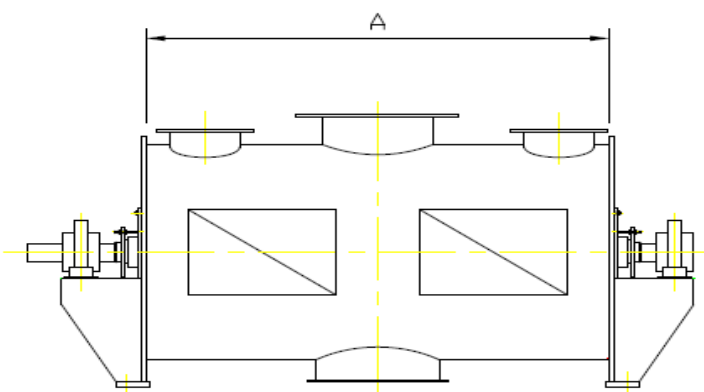
Available from 39 litres to 2940 litres working capacity incorporating any of the following features:

- Heating/Cooling Jacket
- Insulation and Lagging
- Vacuum Construction
- Flameproof Electrics
- Variable speeds
- Electric Control Panel
- Food and Pharmaceutical Finishes
- Wear Resistance
- Special Inlets and Outlets

Multi-mixers operate on the principle of a mechanically generated fluid bed with 3 dimensional movement. They are perfect for mixing a range of components from fine powder to heavy pastes such as putty and marzipan.

Morton Multi-mixers can be tailor made to suit the customers application and process parameters. These mixers are available in both Batch and Continuous applications.

Multi-Mixer Specification					
Model	Working Capacity	Total Capacity	Dimensions in mm (approx)		
	Litres	Litres	A	B	C
B130	39-91	130	667	591	895
B300	90-210	300	902	762	953
B600	180-420	600	1200	864	1124
B800	240-560	800	1400	864	1283
B1200	360-840	1200	1715	1067	1556
B1600	480-1120	1600	1690	1220	1300
B2000	600-1400	2000	1809	1270	1454
B3000	900-2100	3000	2960	1270	1454
B4200	1260-2940	4200	3674	1430	1517



MORTON MIXERS & BLENDERS LIMITED

Grovetree Business Centre, Strathclyde Business Park, Bellshill ML4 3NQ, Scotland U.K.

Tel: +44 (0)845 2770939

Fax: +44 (0)845 2770949

Web: www.morton-mixers.co.uk

Email: info@morton-mixers.co.uk